

La maestra
Ilaria



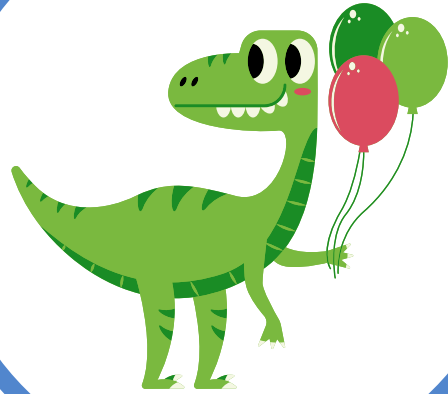
La maestra
Ilaria



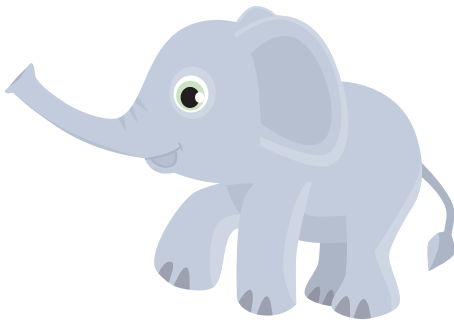
La maestra
Ilaria



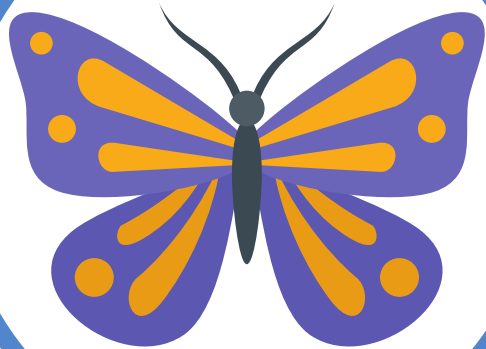
La maestra
Ilaria



La maestra
Ilaria



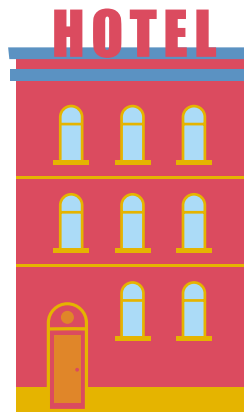
La maestra
Ilaria



La maestra
Ilaria



La maestra
Ilaria



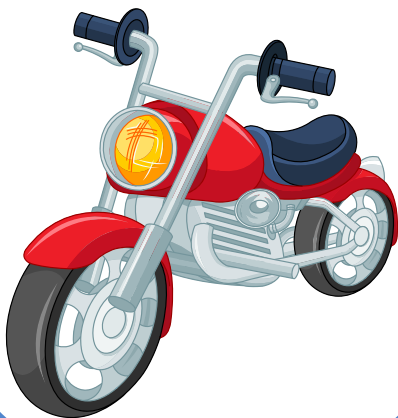
La maestra
Ilaria



La maestra
Ilaria



La maestra
Ilaria

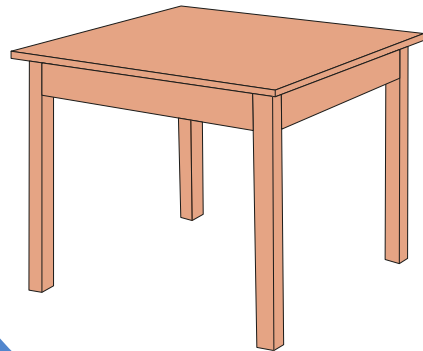
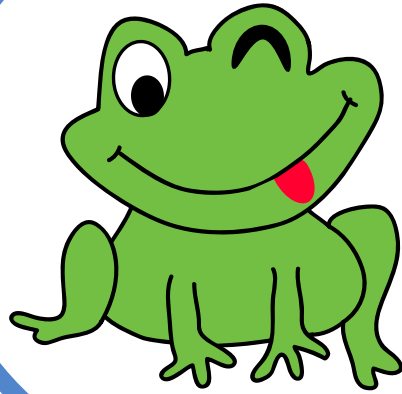


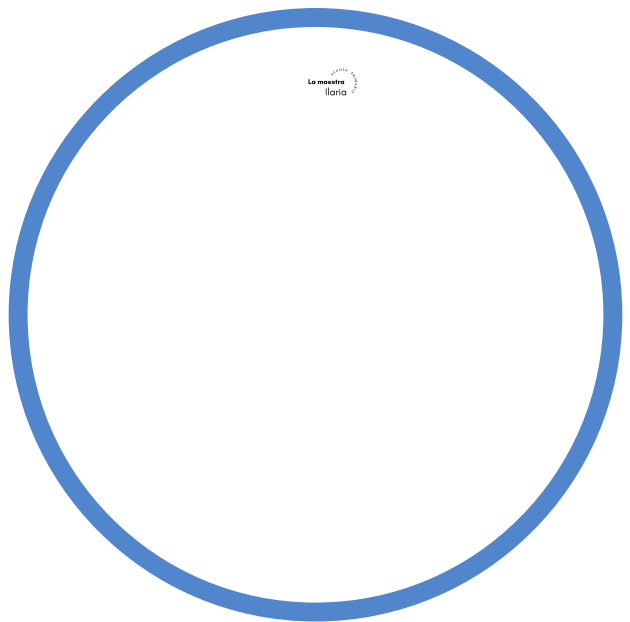
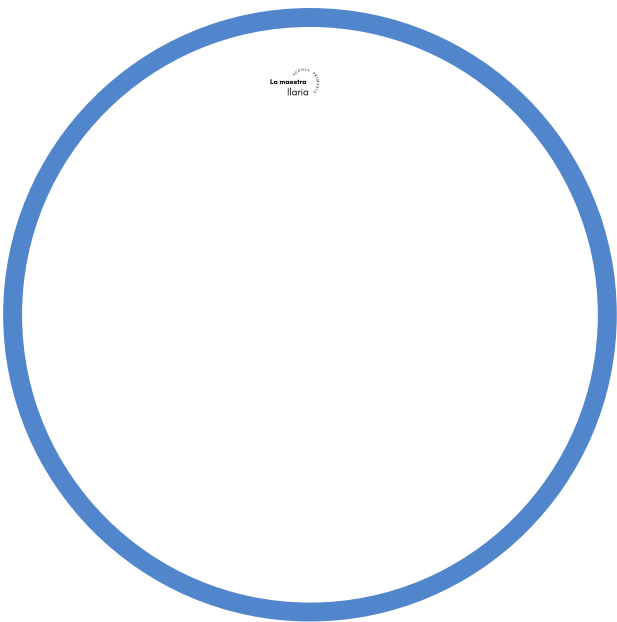
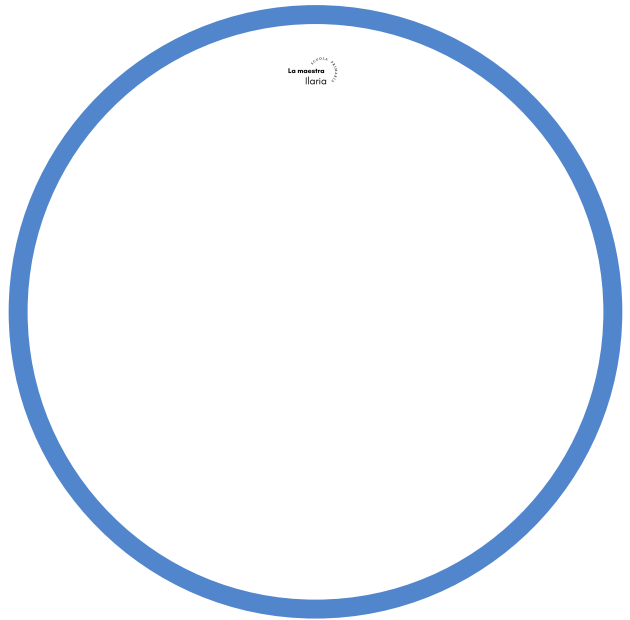
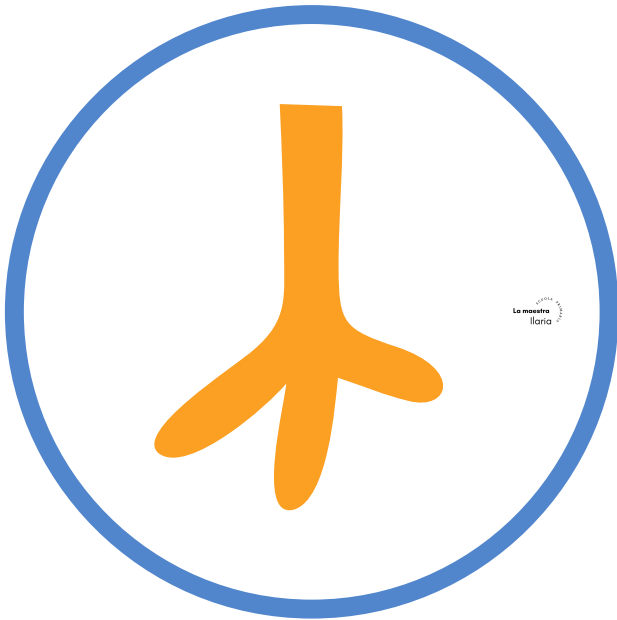
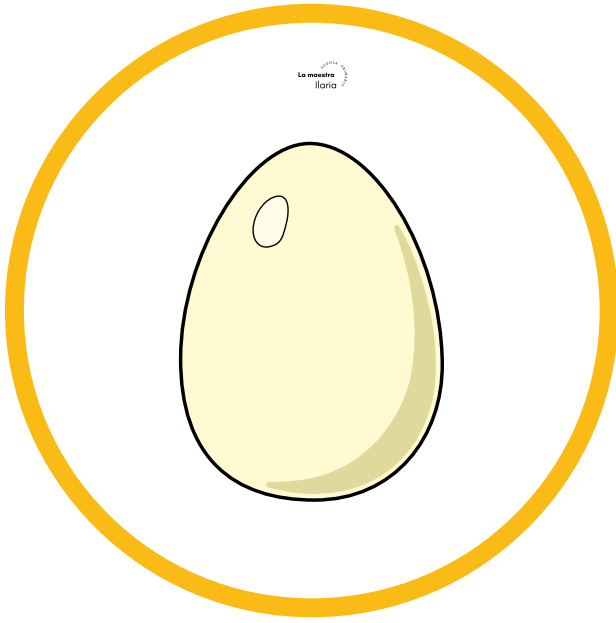
La maestra
Ilaria





4





INDICAZIONI

Ritagliare i cerchi, rinforzarli con un cartoncino e trasformarli in tante "palette " aggiungendo un bastoncino, ad esempio uno stecco-gelato, fissato con la cucitrice.

Per rendere i cerchi più duraturi e robusti si possono plastificare.

DISEGNI NEI CERCHI

A = APE

B = BRUCO

C = CASA

D = DINOSAURO

E = ELEFANTE

F = FARFALLA

G = GALLO

H = HOTEL

I = ISOLA

L = LANA

M = MOTO

N = NAVE

O = ORSO

P = PIPA

Q = QUATTRO

R = RANA

S = SOLE

T = TAVOLO

U = UOVO

V = VENTO

Z = ZAMPA